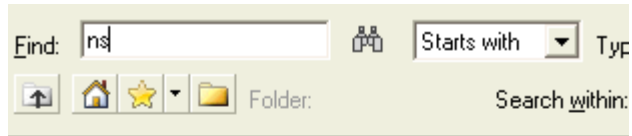


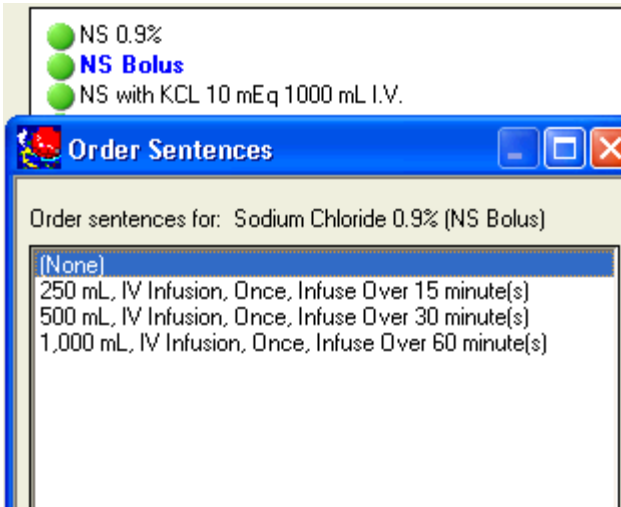
Ordering IV Fluids

When ordering IV fluids and boluses,
Please use "Starts with". For example the search string "ns"

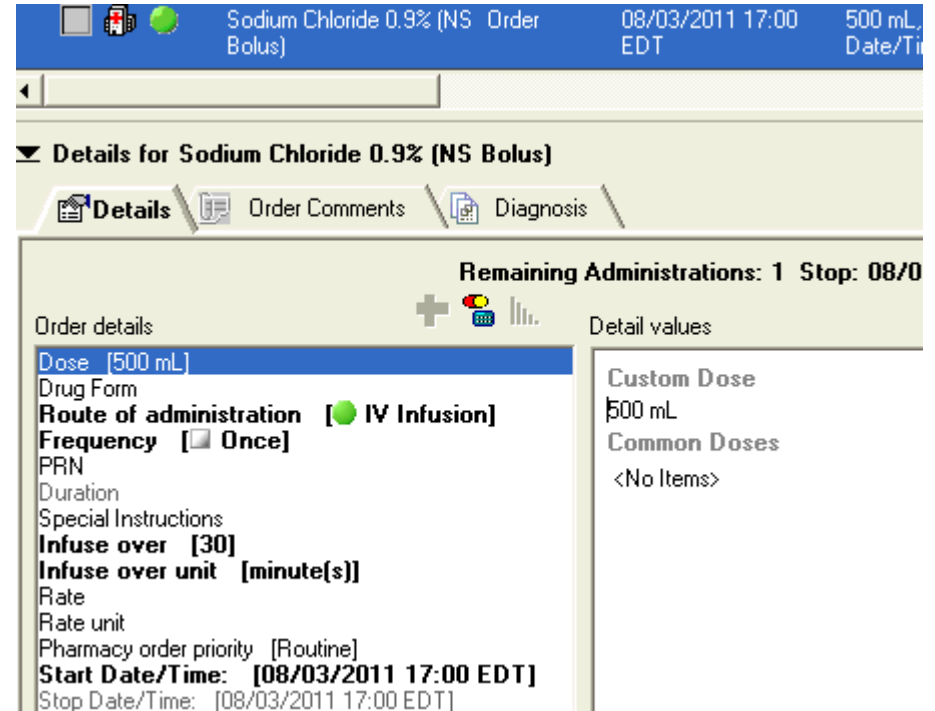


- NS 0.9%
- NS Bolus
- NS with KCL 10 mEq 1000 mL I.V.
- NS with KCL 15 mEq 1000 mL I.V.
- NS with KCL 20 mEq 1000 mL I.V.
- NS with KCL 30 mEq 1000 mL I.V.
- NS with KCL 40 mEq 1000 mL I.V.
- NS with MVI 10 mL + Thiamine 100 mg + Folic Acid 1mg 100
- NS with Sodium Bicarbonate 100 mEq/1000 mL I.V.
- NS with Sodium Bicarbonate 150 mEq/1000 mL I.V.
- NS with Sodium Bicarbonate 50 mEq/1000 mL I.V.
- NST (Non-Stress Test)

Select "NS Bolus" to bolus someone.



Note the START date / time of the Bolus order. Please be aware of all Start Date/times of orders.



Note: Frequency of ONCE. And Start time of 1700.
This is a 500 ml NS bolus to be given once now.

Changing the rate of a fluid, for example to 145 ml/hr

1. search NS

2. Select a rate

3. Goto Continuous Details.

4. **Change number only to 145**

5. Leave ml/hr

Order Name	Status	Start	Details
Sodium Chloride 0.9% 1000 mL	Order	08/03/2011 17:05 EDT	100 mL/hr, Infuse over: 10 hr

Base Solution	Bag Volume	Rate	Infuse Over
Sodium Chloride 0.9%	1000 mL	100 mL/hr	10 hr
Additive	Additive Dose	Occurrence	
Total Bag Volume	1000 mL		

Adding Additives to a fluid:

Always pick the **BASELINE FLUID**. (eg, NS, D5W, 1/2 NS, LR, etc.)

NOT a fluid that already has an additive eg, 1/2NS with 20 KCL (KCL is the additive).

To create NS with 20 Meq of KCL:

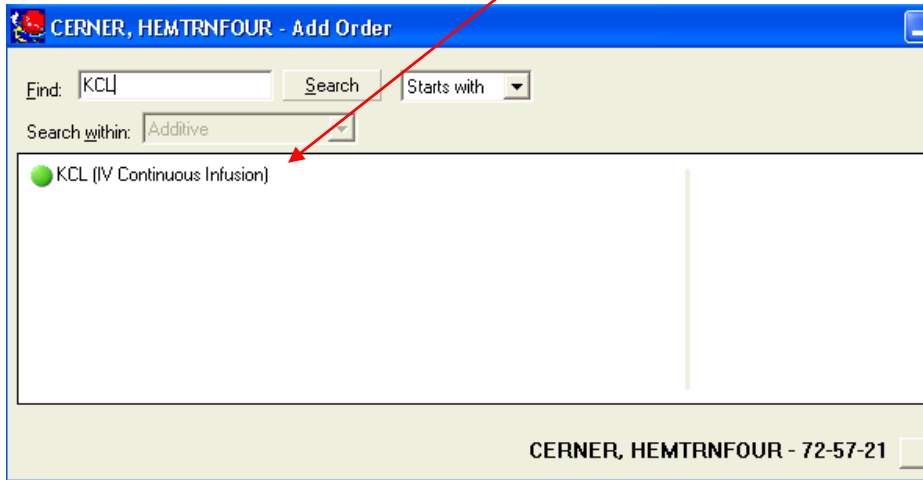
Select NS, goto "Continuous Details", click the "**Additive**" button

Order Name	Status	Start	Details
Sodium Chloride 0.9% 1000 mL	Order	08/03/2011 17:05 EDT	100 mL/hr, Infuse over: 10 hr

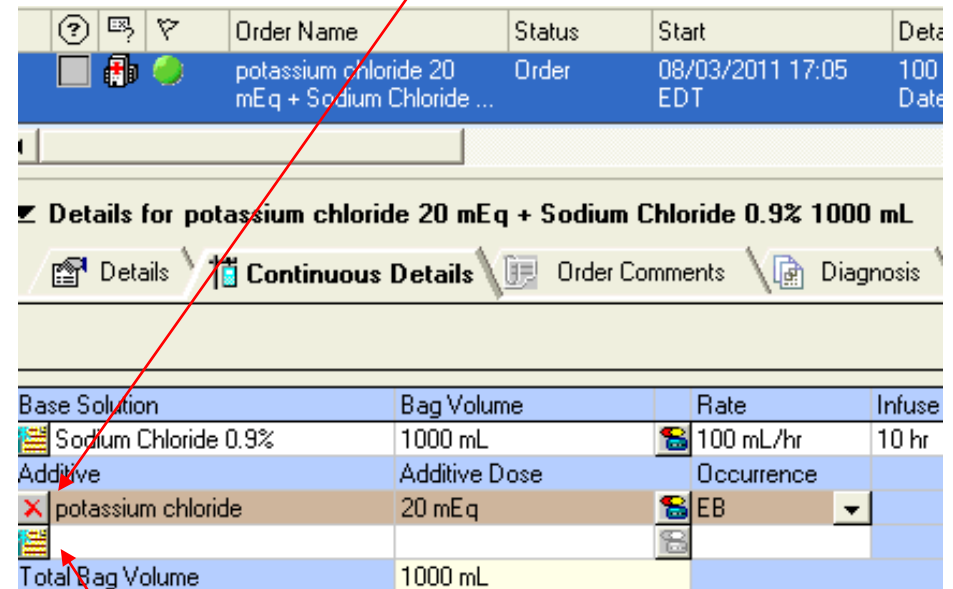
Continuous Details

Base Solution	Bag Volume	Rate	Infuse Over
Sodium Chloride 0.9%	1000 mL	100 mL/hr	10 hr
Additive	Additive Dose	Occurrence	
Total Bag Volume	1000 mL		

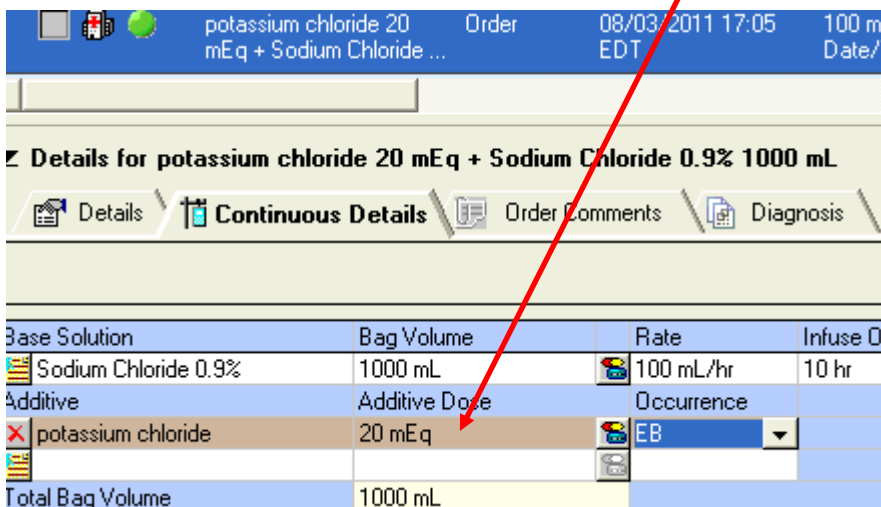
Type KCL, use “Starts with”, select KCL, click “Done”



You can delete the additive:



You MUST manually type in exactly “20 meq” hit “tab” or “enter” button on keyboard in the following box:



Add additional additives. **Warning: SOME additives cannot be mixed together. YOU will get a call from pharmacy in that scenario. If uncertain, please call pharmacy first.**